

State of Washington Collegiate Recovery Initiative Virtual Learning Community

A Pragmatic Approach to Collegiate Recovery Data Collection

Austin Brown, PhD Candidate, Syracuse University, New York

Jessica McDaniel, BS, Assistant for Research Initiative, Center for
Addiction and Recovery, Kennesaw State University, Georgia

Thursday, January 7, 2020 | 11:00 am – 12:00 PM PT



State of Washington Collegiate Recovery Initiative Team

Washington State University –
Initiative/Contract Admin

Patricia Maarhuis, PhD (she/her)
Health Promotion Specialist
Cougar Health Services

Paula M. Adams, M.A. (she/her)
Director, Health Promotion
Cougar Health Services

Jon Wallis (he/him)
Collegiate Recovery Project Coordinator
Cougar Health Services - Health Promotion

C4 Innovations – Sub-contractor

Kristen Harper, M.Ed. (she/her)
Recovery Specialist

Courtney Williams (she/her)
Project Coordinator

Jonathan Cox, PhD (he/him)
Senior Associate

Ariel (Air) Britt, MSW (she/her)
Recovery Specialist

Lee Locke-Hardy (they/them)
Operations Assistant



Introduction to Plenary Series



- ❖ **Plenary sessions are part of State of WA-HCA Recovery Support Initiative contract/grant awarded to WSU.** Initiative includes:
 - ❖ Statewide Recovery Services Asset Mapping project
 - ❖ Statewide Evaluation of Collegiate Recovery services and funding
 - ❖ Public dissemination of RS initiative findings and materials for ongoing use

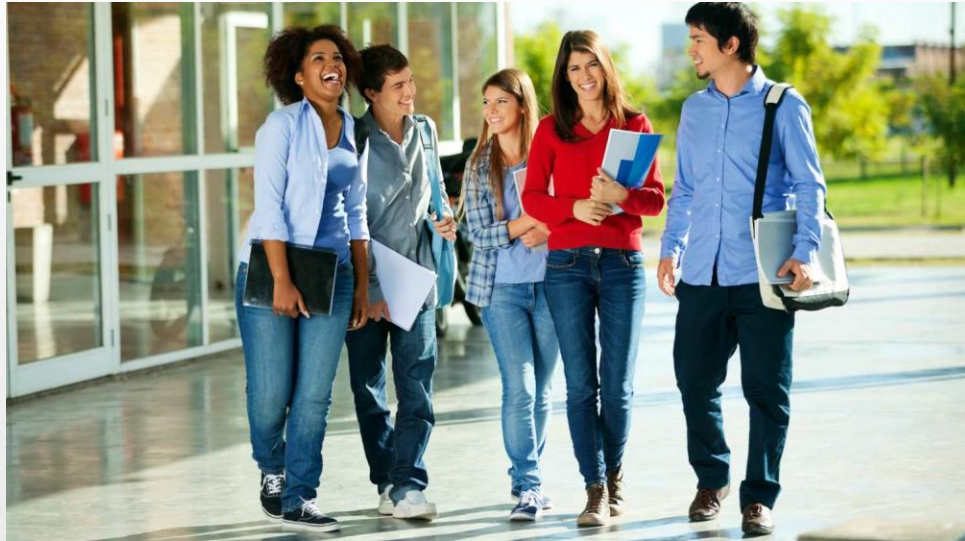
- ❖ **Acknowledgments:**
 - ❖ Representative Lauren Davis and colleagues for their work on the initiative and funding source, House Bill 1528
 - ❖ HCA Contract Manager Edward Michael, Child and Adolescent Substance Use Disorder, Co-occurring Program Manager

- ❖ **Four more plenary sessions, February 2021 through April 2021**

- ❖ **Collegiate Recovery Virtual Summit, May 20th - 21st, 2021**



Purpose of Statewide Education Efforts: Development of CRP Supports



A collegiate recovery program (CRP) is a College or University-provided, supportive environment within the campus culture that reinforces the decision to engage in a lifestyle of recovery from substance use. It is designed to provide an educational opportunity alongside recovery support to ensure that students do not have to sacrifice one for the other.

(Association of Recovery in Higher Education - ARHE, 2020)



Virtual Learning Community Schedule

- **February 18th, 2021: Asset Mapping**

Speakers include Kristen Harper (C4 Innovations) & Ely Hernandez (Washington Recovery Alliance)

- **March 4th, 2021: Cultivating Community Partnerships**

Speakers include Jamichael “Jay” Harris (ARHE), Susie Mullens (Marshall University), and more.

- **April 1st, 2021: Multiple Pathways of Recovery and the Intersection of Harm Reduction**

Speakers include Ariel Britt (SAFE Project), Ahmed Hosni (Ohio State University) and Aaron Kirk (Skagit Valley College)

- **April 29th, 2021: Student Recruitment & Retention**

Speakers include Olivia Pence (West Virginia University), Jonathan Lofgren (Minneapolis Community & Technical College), and Seth Welch (Interagency Academy, Seattle)

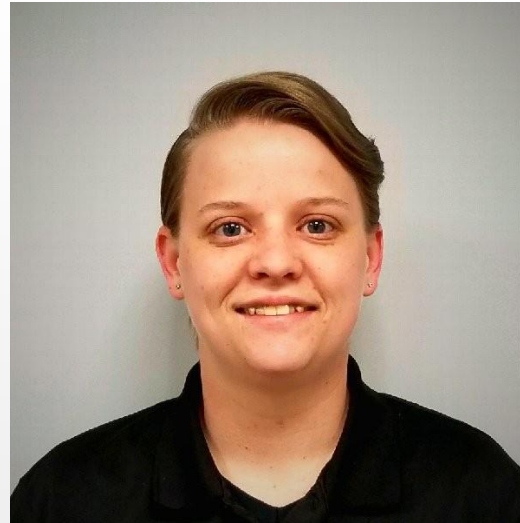
- **May 20th & 21st: Washington State Collegiate Recovery Virtual Summit**

Seed grant recipient presentations, keynote speakers, and more.

***All events are scheduled from 11:00am – 12:00 pm PT**



Collegiate Recovery Data



Jessica McDaniel, BS,
Assistant for Research Initiative
Center for Addiction and
Recovery
Kennesaw State University



Collegiate Recovery Programs: What are They?

- CRPs take a myriad of forms, no two are identical
- Still there are some similarities across CRPs
 - CRPs are based on a social model of support
 - CRPs direct services toward the intersection of being a student and being a person in recovery
 - CRPs often (though not always) have the highest degree of contact with that particular set of students



How Does This Turn Into Data?

- High degree of contact with students: Can be an endless stream of potential data.
- Conversations with students can be converted into useful data points for reporting.
- Big considerations:
 - ✓ Documenting the information received from students (notes after conversations)
 - ✓ Ensuring that students are aware of data collection and consent



How Does This Turn Into Data, cont'd?

- CRP specific programming can translate to data collection
 - Seminars
 - Academic advising
 - Recovery check-ins
 - Beginning or end of semester surveys
- Important: Capturing information about what students' needs on a regular basis.
- As we continuously collect this information, we will capture how they change in our programs which will contextualize our impact.



An Additional Note

- We can at least preemptively frame our exploration in terms of what we know CRPs do.
- Since we know CRPs operate on a social model of support, social measures and interpretations are a good place to start.
- CRPs provide services at the intersection of being a student and being a person in recovery
 - Studies on intersectionality and intersectional identity development can help guide our work.

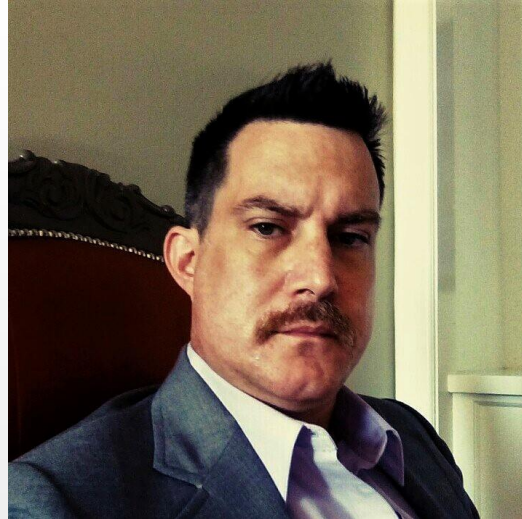


Competing and Conflicting Interests

- Various University/CRP stakeholders can have different interests, and the reports/outcomes they want don't always align.
- Students and survey fatigue.
- Colleges/University: Valuing the growth and development of students outside of the classroom?
- Budgets and expectations?
- Evidence for knowing CRPs help students to succeed personally and professionally.
- Evaluation and best practices in CRP service provision.



Outcome Expectancies



Austin McNeill Brown, LMSW
He, Him, His
Ph.D. Student/Research Affiliate
Maxwell School of Citizenship and Public Affairs
Lerner Center for Public Health Promotion
Syracuse University



Alignment: Two Types of Outcomes

University Outcomes

- Retention
- Progression
- Graduation
- GPA
- Service to the University
- Academic History
- Disciplinary Data

Recovery Outcomes

- Participation in active recovery
- Service to Others/Leadership
- Application of recovery to educational challenges
- Maintenance of recovery
- Psychological Well-Being
- Healthy Relationships
- Life Balance



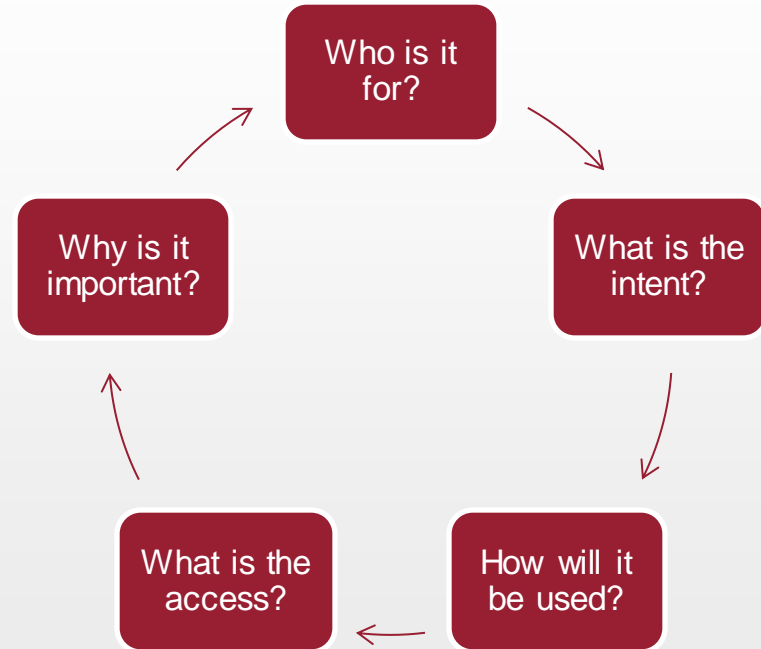
Selecting the Right Tool

- Standard Educational Tools (Student Affairs Metrics vs Academic Metrics)
- Infrastructure and Software
- Banner Access
- Program Design and Funding
- Yearly Progress Reporting and Budget Reporting
- Level of Permission from University and Students for Data
- Recovery Metrics, and Psychosocial Metrics
- Research Method (Cross Sectional, Longitudinal, Mixed Methods)
- Qualitative Interviews and Focus Groups



Goal and Deliverables

- What is the purpose of your data?
- The five W's
- Fighting for your life vs scientific contribution vs STOP?
- Degrees of access determine data quality, which in turn determines deliverables





Challenges in Identity and Diversity

- Presence is more important than size
- Talk to everyone
- Sit in on department meetings and student affairs boards
- Create a digital presence
- Align your mission
- Let your students speak for you
- Consider recruitment streams
- Know the basics of disability culture
- Participate in the diversity discussions and boards on campus
- Have specific policies



Outsourcing and Partnership

- University settings already have an assortment of programs, supports, and communities
- Spending time within various student programming ecosystems develops mutual relationships
- Having clear mission and visions for your community allows you to identify areas for collaborations
- Small programs can outsource virtually everything.
- Remember that your priorities are to foster a community, not necessarily to have the biggest program
- Student voice is critical in developing collaborations and outsourcing
- Find recovery champions in both academic and SA space.



A Note About Territory and Turf

- We often assume everyone wants to help
- Even well-intentioned people have ambitions
- Being clear about boundaries (you are neither a dumping ground, nor in charge of making students behave better, or drink less)
- Be very precise about your limits of confidentiality, limits of expertise, limits of clinical capacity
- Most misunderstandings can be rectified with education (most people just don't know what you do, or why). Having a concise elevator description can be helpful
- Clearly stating boundaries, and speaking of your community as a special population is important
- There will be people that try to co-opt your program, anticipate this



Questions?



February 18th Plenary Session

Presentation Title: “Asset Mapping”

Description and Objectives:

Participatory Asset Mapping is a process where community members collectively create asset maps by identifying and providing information about their own community’s assets on a map, including citizen associations and local institutions. During this plenary, participants will learn the basic asset mapping framework as well as how to strategically organize the resources collected into categories. This type of adaptation to asset mapping has helped collegiate recovery programs establish critical campus and community relationships which have helped to build sustainable programs.

REGISTRATION LINK IN THE CHAT AND WE WILL EMAIL MORE INFORMATION



**For more information
please contact:**

Jon Wallis, Project Coordinator
Jonathan.wallis@wsu.edu